

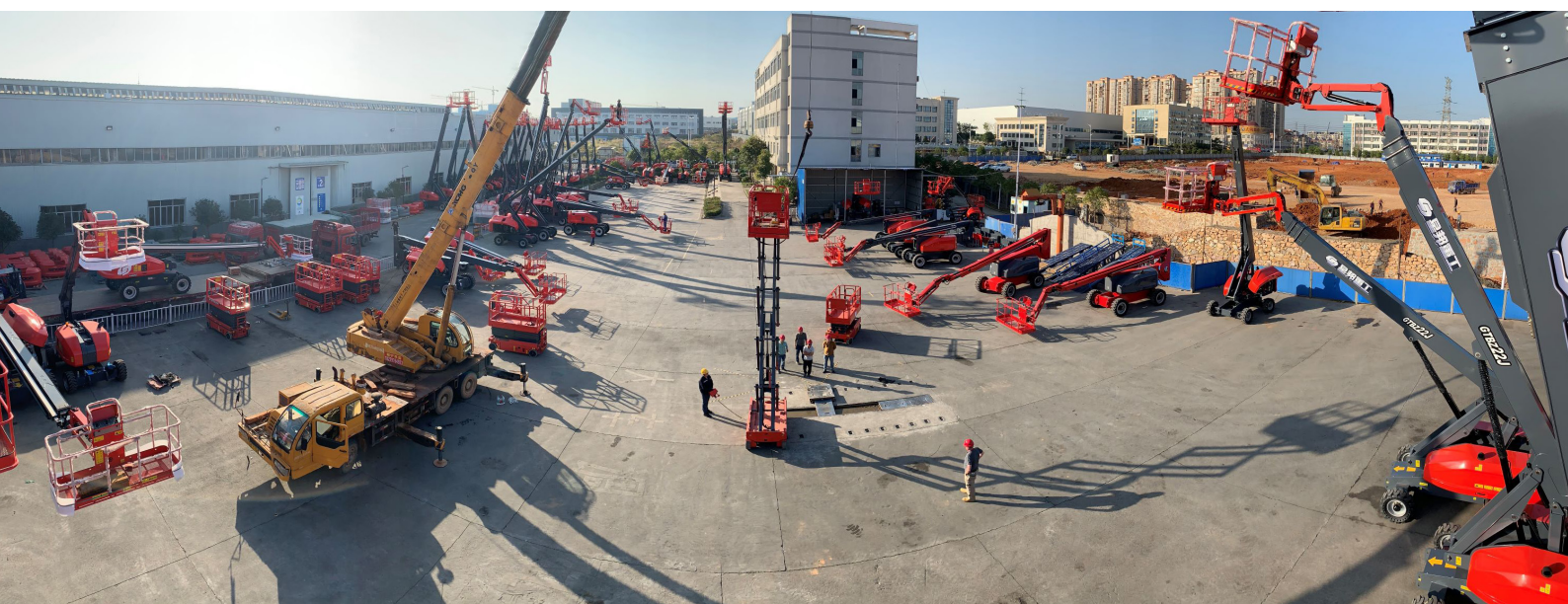
# INSPECTION AND TESTING

**There are 3 stages to executing a successful evaluation of an existing asset:**

**Stage 1** - Inspection is a critical aspect of ascertaining: how to extend an assets design life, mode of failure, overall condition for continued use. Knowing what to look for is critical to safety, cost and functionality. PEA pride ourselves on the experience we have to know when to look past the obvious.

**Stage 2** - Testing & Commissioning requirements vary depending on the asset. PEA has extensive experience in testing & commissioning to Australian and International Standards, clients Innovative solutions and equipment such as prototypes, pressure vessels and pipework, lifting devices including cranes and MEWPS. PEA can carry out your testing requirements and guide you through the complex statutory requirements. Our team of Engineers and Fitters can perform in-house testing our alternatively any location in Australia.

**Stage 3** – Certification, Our team hold Registered Professional Engineer of Queensland (RPEQ) and Chartered Professional Engineer (CPEng) qualifications and are registered on the National Engineering Register (NER) We mitigate client risk and deliver peace of mind. We offer RPEQ, CPEng certification of new or existing designs for compliance across Australian, State, and where applicable international, standards and legislation.



[www.praceng.com.au](http://www.praceng.com.au)  
E [sales@praceng.com.au](mailto:sales@praceng.com.au)  
T + 61 (0)7 3875 2133

**Address**  
Kings Row Office Park, Building 1,  
Level 3, 52 McDougall St, Milton  
QLD 4064

**Postal**  
PO Box 4, Bald Hills QLD  
4036, Australia