

EQUIPMENT CERTIFICATION

Certification provides confidence that your equipment is safe for use, will perform as specified and improve equipment efficiencies by reducing unplanned downtime.

At Practical Engineering we specialise in the design, verification, testing, inspection and certification of all lifting transport and mounting equipment to comply with general WHS regulation. This includes construction sites, fabrication workshops, manufacturing plants, oil and gas facilities, mines and quarries.

WHAT EQUIPMENT WE CERTIFY?

Practical Engineering provide RPEQ/CPEng Certificates of Compliance and Certification plates for the following equipment:

- Lifting equipment
- Cranes and winches
- Fabricated structures
- Access systems
- Pressure vessels
- Lifting/Lashing arrangements
- Pressure pipework
- Process skids
- Tanks of any size
- Custom equipment and modification

WHAT INFORMATION IS REQUIRED ?

For our engineers to be able to analyse and certify your equipment we typically need to know:

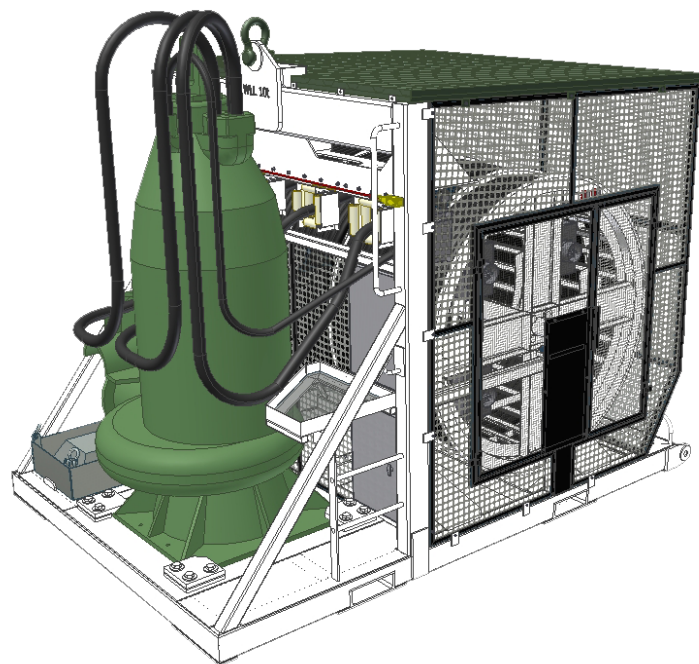
- Overall geometry
- Material specifications
- Detailed geometry
- Weld detail
- Detailed description of load cases (forklift, crane lift, wind etc.)

This information can be provided to Practical Engineering in the form of 3D models, detailed drawings, clearly marked up photographs or hand sketches. This information will then be referenced on our certificate of compliance.

HOW MUCH WILL IT COST?

Due to the highly variable nature of equipment certified by Practical Engineering, we issue individual fixed price quotations for most projects.

The cost of a certification jobs is a function of the level of analysis required to ensure compliance and fitness-for-purpose of a design. Feel free to call our sales staff to discuss your requirements.



www.praceng.com.au
E sales@praceng.com.au
T + 61 (0)7 3875 2133

Address
Kings Row Office Park, Building 1,
Level 3, 52 McDougall St, Milton
QLD 4064

Postal
PO Box 4, Bald Hills QLD
4036, Australia



WHAT IS INVOLVED

Design certification of mechanical equipment involves an engineer performing a theoretical analysis typically against an industry recognised standard. Being a theoretical analysis in most instances our engineers do not need to travel to site (as long as sufficient information is supplied) and the work is completed in our office. Refer to the certification process flowchart over page for a more detailed look at the process.

HOW LONG DOES IT TAKE?

Lead times for certification of mechanical equipment is highly variable and dependent on a number of factors. Typical leadtimes range from 5-10 days.

Practical Engineering also specialises in rapid turnarounds of certifications if required. Simply give the office a call to discuss how we can assist you.

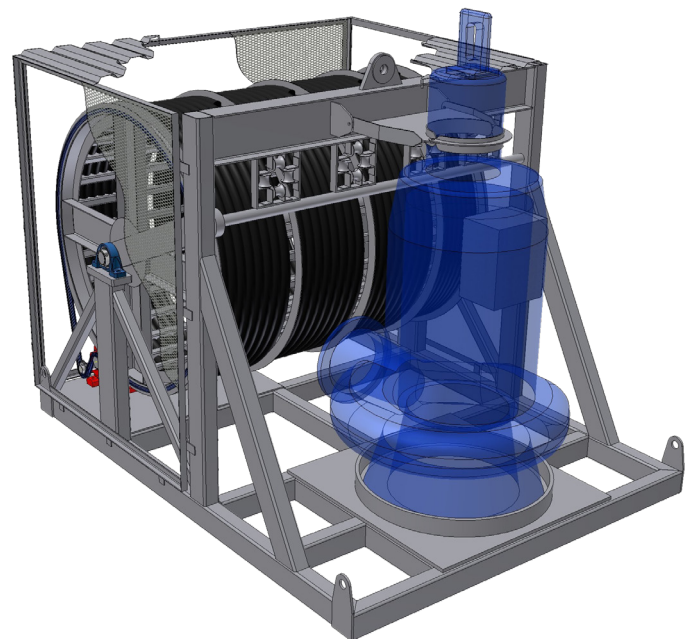
WHAT WILL I GET?

- Certificates of Compliance
- Laser engraved certification plates
- Design reports

CRANES AND HEAVY LIFTING - TESTING AND INSPECTION AND CERTIFICATION

Code Certification Via Testing:

- Australian Standards
- ISO Standards
- API Standards (American Petroleum Institute)



www.praceng.com.au
E sales@praceng.com.au
T + 61 (0)7 3875 2133

Address
 Kings Row Office Park, Building 1,
 Level 3, 52 McDougall St, Milton
 QLD 4064

Postal
 PO Box 4, Bald Hills QLD
 4036, Australia